

Customer :

customer

Customer part :

customer part

Comment :

Comment

S1=0.01

S2=0.17

Tmax=563

Tp S2=602.0

PI=0.06

HI=20

Sample =9319.4

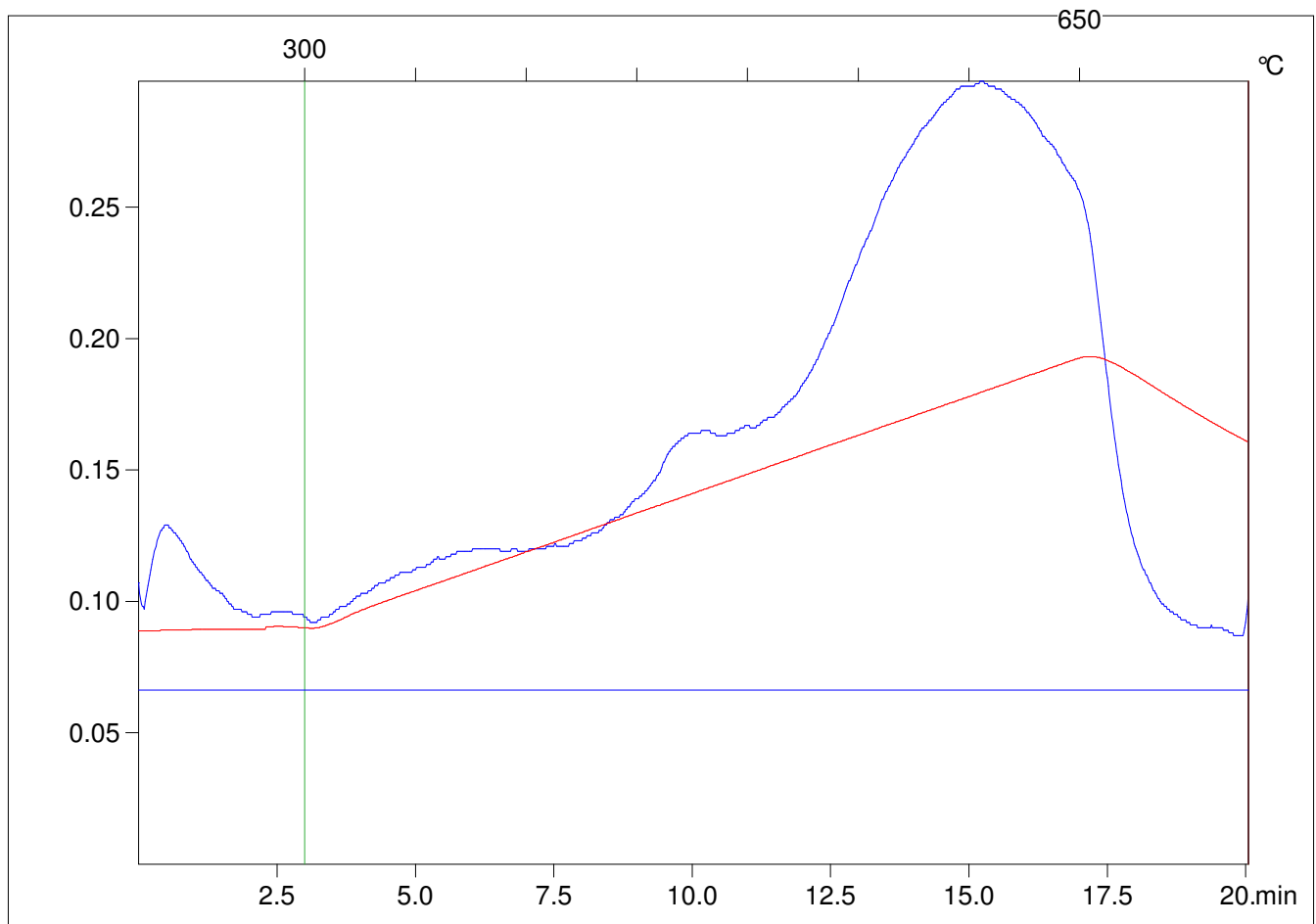
Method =Bulk Rock

Cycle=Basic

KFID(10*9)=1167

Qty =70.1

TOC=0.83



C:\VINC\PK141015\PK073.R00 : FID pyrolysis graphic

State

Pyro Status

Oxi Status